



## **Utilization of SSR Markers for Studying Genetic Diversity of Popular Maize and their Hybrids**

**Shalu Chaudhary<sup>1\*</sup>, Pushpa Kharb<sup>1</sup>, Shikha Yashveer<sup>1</sup>, Deepak Raj Prajapati<sup>2</sup>,  
and Mehar Chand Kamboj<sup>2</sup>**

<sup>1</sup>Department of Molecular Biology, Biotechnology and Bioinformatics, COBSH, CCSHAU, Hisar-125004, Haryana, India

<sup>2</sup>Department of Genetics and Plant Breeding, COA, CCSHAU, Hisar-125004, Haryana, India

### **ABSTRACT**

*The variability is prerequisite for any breeding programme. SSR markers can be used for analysis of genetic diversity of genotypes. In present study, a total of 75 Simple Sequence Repeat (SSR) primers were used to screen 14 genotypes of maize parents and their hybrids for genetic study. The 14 genotypes were divided into two major clusters at a similarity coefficient of 59%. Major cluster I and II consisted of six genotypes and eight genotypes at a similarity coefficient of 59.5%. Allelic profile for present SSR markers shows that primers amplified a total of eighty nine alleles which varied from 1 (pumc1009) to 3 (pumc1183) with a mean of 1.5 allele per locus. These markers are highly accurate, efficient and reproducible for genetic diversity study and identification at any developmental stage.*

*Keywords: SSR Markers, Zea mays, PCR amplification*

Received 19.08.2018

Revised 26.09.2018

Accepted 12.11.2018

### **INTRODUCTION**

Maize (*Zea mays* L.) is one of the most important food, feed and industrial crop globally. It is predominantly a cross pollinating species, a feature that has contributed to its broad morphological variability and geographical adaptability. Economically, the most important types of maize are grown for grain or fodder and silage production. FAO predicts that an additional 60 Mt of maize grain will be needed from the annual global harvest by 2030. The demand for maize as an animal feed will continue to grow faster than the demand for its use as a human food, particularly in Asia, where a doubling of production is expected from the present level of 165 Mt to almost 400 Mt in 2030 [13]. As the variability is prerequisite for any breeding programme, improvement of quality and quantity depends on utilization of existing variability [14]. Hybridization is one way to utilize existing genotypic variability. But for better hybridization programme we need to have a clear-cut idea about genetic dissimilarities between parents. Genetic distances determined by molecular markers like simple sequence repeats (SSRs) is a powerful tool to assess the genetic conformity between hybrids and their inbred lines and also for the estimation of genetic diversity. The utilization of molecular markers such as simple sequence repeats (SSRs) for Genetic distances determination is an appropriate as there are few number of morphological markers and biochemical markers available. Detailed knowledge of the diversity and genetic relatedness among the genotypes will be an important aid in the crop improvement strategies. It can be also used for development of varieties that can give optimum agricultural productivity under limited input conditions. Diversity analysis can also be an aid to the gene mining or identifying the regions in genome associated with wider adaptability and agronomically superior traits.

### **MATERIAL AND METHODS**

The experimental plant material comprised of six hybrids of maize along with eight their respective parents and was obtained from Maize Section, Department of Genetics and Plant Breeding, Regional Research Station, Uchani, CCS Haryana Agriculture University, Hisar, Haryana-125004.

**Table.1. Parents and their hybrids used for study.**

Sr. No.	Hybrids	Parent I	Parent II
1.	HQPM-1	HKI193-1	HKI163
2.	HQPM-4	HKI193-2	HKI161
3.	HQPM-5	HKI163	HKI161
4.	HQPM-7	HKI193-1	HKI161
5.	HM-4	HKI1105	HKI323
6.	HM-2	HKI1352	HKI1344

**DNA Isolation**

A total of 75 SSR primers were used in the present investigation. Primers were accessed from Imperial Life Sciences, USA. Genomic DNA of maize hybrids and their parents was isolated from the young leaves of all the genotypes using CTAB (Cetyl Trimethyl Ammonium Bromide) extraction method given by Murray and Thompson (1980) and modified by [17]. Followed by treatment with 2 µl of RNAase A solution (5mg/ml) per 50 µl DNA sample to remove RNA contamination. Quality of DNA was checked by submerged horizontal electrophoresis. A 0.8% (w/v) agarose gel was prepared for this [18]. For estimation of quantity by 0.8% agarose gel electrophoresis, a lambda DNA of known concentration (50 ng/ µl) was run along with DNA samples. PCR amplification reaction was carried out in G-Storm and Bio-Rad thermocyclers. PCR amplified products were first checked for amplification on 2.5% agarose gel electrophoresis. Samples were prepared by adding 6X loading dye. PCR amplified products were viewed under UV light fluorescence using Benchtop UV transilluminator.

**PCR Amplification**

Seventy five SSR primer pairs were selected for this study. PCR was performed in a reaction mixture volume of 20 µl containing of 30 ng of template DNA, 1 x PCR buffer with 1.5 mM of MgCl<sub>2</sub>, 0.2 mM of each dNTPs, 10 pmol of each primers and 1U of Taq DNA polymerase. PCR was carried out in a Thermal Cycler programmed for 35 cycles of 95°C (5 min), 94°C (1 min) 56°C (30 Sec.), 72°C (1 min) then followed by final-extension at 72°C for 10 min. PCR products (10 µl) were used for electrophoresis and the amplicons were resolved on 2.5 % agarose gel stained with ethidium bromide at 1 µg/ ml, and visualized under UV in a gel documentation system and impurities were identified based on deviations in expected amplification pattern

**Allele Scoring**

Bands for SSR analysis were scored based on the presence (taken as 1) or absence (taken as 0) of bands. The size (in nucleotides base pairs) of the most intensely amplified bands for each microsatellite marker was determined based on its migration relative to standard DNA marker (100 bp DNA ladder). Multiple alleles were inferred whenever a given marker produced more than one clusters of bands.

**Data analysis**

The polymorphism information content (PIC) for each SSR marker was calculated according to the formula given by Anderson *et al.* (1993):

$$PIC_i = 1 - \sum_{j=1}^n p_{ij}^2$$

Where,

$p_{ij}$  = frequency of the  $j^{\text{th}}$  allele for marker  $i$

0/1 matrix of allele scoring was used to calculate the similarity genetic distance using 'SIMQUAL' sub-programme of NTSYS-pc (version 2.02e) software (Numerical Taxonomy and Multivariate Analysis System Programme. Dendrogram was constructed by using distance matrix in SAHN sub-programme of NTSYS-pc by the Unweighted Pair-Group Method with Arithmetic Average (UPGMA) algorithm. Principal Component Analysis (PCA) was done to construct 2 and 3 dimensional diagrams.

**RESULT AND DISCUSSION**

Genetic diversity refers to the variations within the individual gene loci among alleles of a gene, or gene combinations, between individual plants or between plant populations. Analysis of the pattern of genetic diversity in crops is invaluable as it opens up the possibilities for systematic management, conservation and introgression of desirable genes from diverse genetic sources into the elite material, as well as derivation of novel and useful germplasm [23]. The use of DNA markers to obtain genotype specific profiles had distinct advantages over morphological and biochemical methods. The morphological markers may be influenced by the environmental conditions, laborious and time taking. However, the biochemical markers such as isozyme and protein patterns are least influenced by the environment but

the polymorphism is again limitation for such markers [10]. SSR had much more polymorphism than most of other DNA markers, and is co-dominant and large in quantity. Therefore, the high polymorphic information content (PIC) of SSR had promoted the application of microsatellites as molecular markers in fingerprinting [2]. In this study primer pairs of 75 SSRs associated with each hybrid and parental lines were assessed on 2.5 per cent agarose.

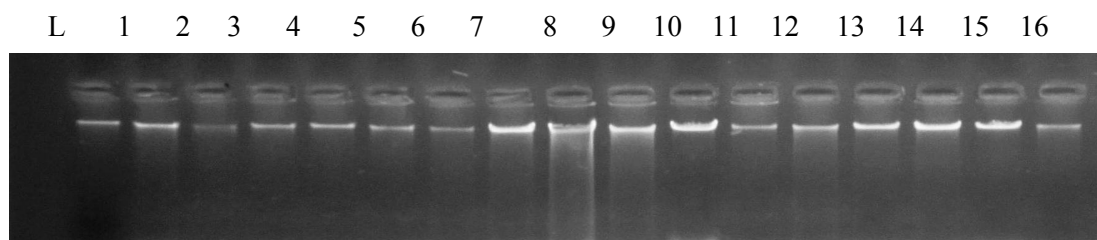
#### Genetic diversity analysis

The SSR diversity data was used for genetic diversity analysis among six maize hybrids and their parents using Numerical Taxonomy and Multivariate Analysis System (NTSYS-PC) software version 2.02e. Seventy five SSR markers were used for analysis in present study. After gel electrophoresis of PCR products, each band was considered as a single allele and alleles were scored as present (1) or absent (0). The matrix was analyzed to construct dendrogram using SAHN sub-program. The SAHN sub-program uses UPGMA algorithm to perform cluster analysis.

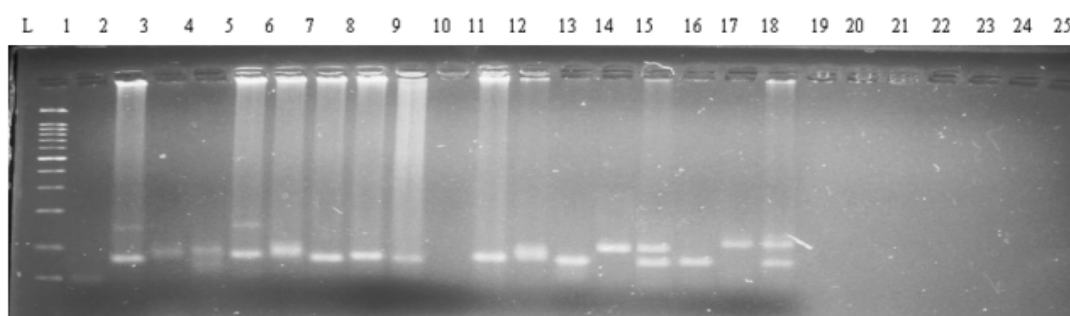
#### SSRs based clustering

Analysis of the pattern of genetic diversity in crops is invaluable as it opens up the possibilities for systematic management, conservation and introgression of desirable genes from diverse genetic sources into the elite material, as well as derivation of novel and useful germplasm (Wasala and Prasanna, 2012). Data obtained from seventy five SSRs were used to construct the dendrogram using Numerical Taxonomy and Multivariate Analysis System (NTSYS-PC) software version 2.02e, and UPGMA algorithm to perform cluster analysis.

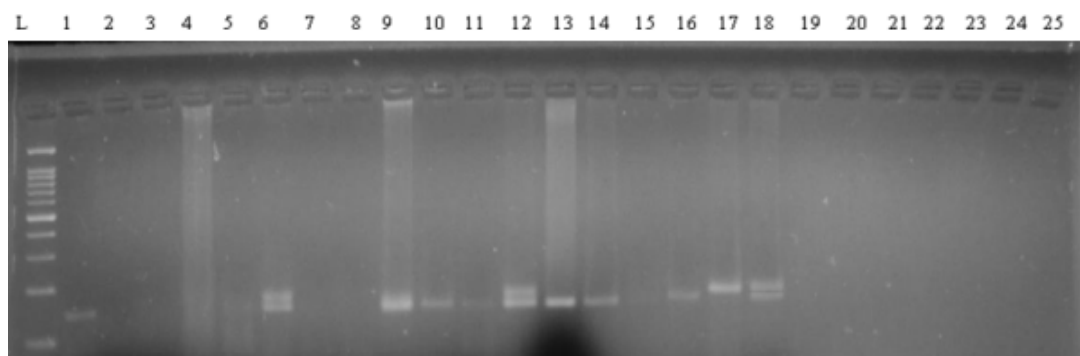
The fourteen genotypes were divided into two major clusters at a similarity coefficient of 59%. Major cluster I and II consisted of six genotypes and eight genotypes at a similarity coefficient of 59.5%. These two major clusters I and II were further divided into two sub clusters at similarity coefficient of 60.5% and 59.5% respectively.



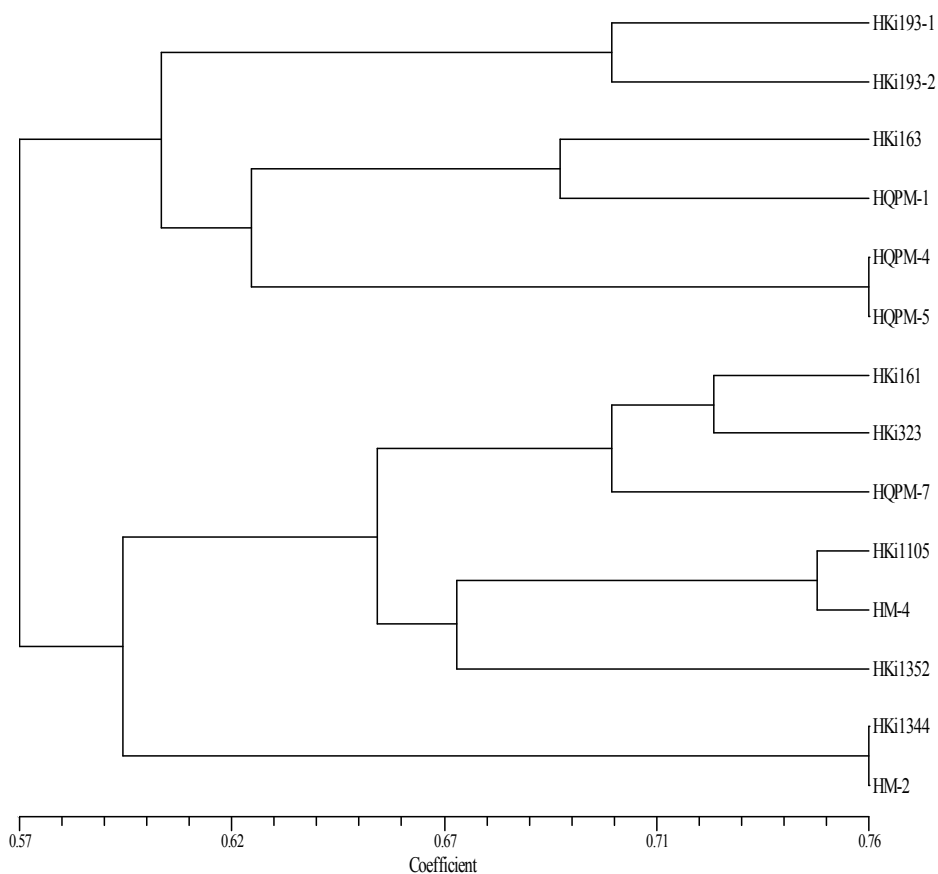
**Plate.1: Genomic DNA L:** 50ng Lambda DNA, lane 1: HKI 193-1, lane 2: HKI193-2, lane 3: HKI163, lane 4: HKI163, lane 5: HKI161, lane 6: HKI161, lane 7: HKI1352, lane 8: HKI1105, lane 9: HKI1344, lane 10: HKI323, lane 11: HQPM-1, lane 12: HQPM-4, lane 13: HQPM-5, lane 14: HQPM-7, lane15: HM2, lane 16: HM4



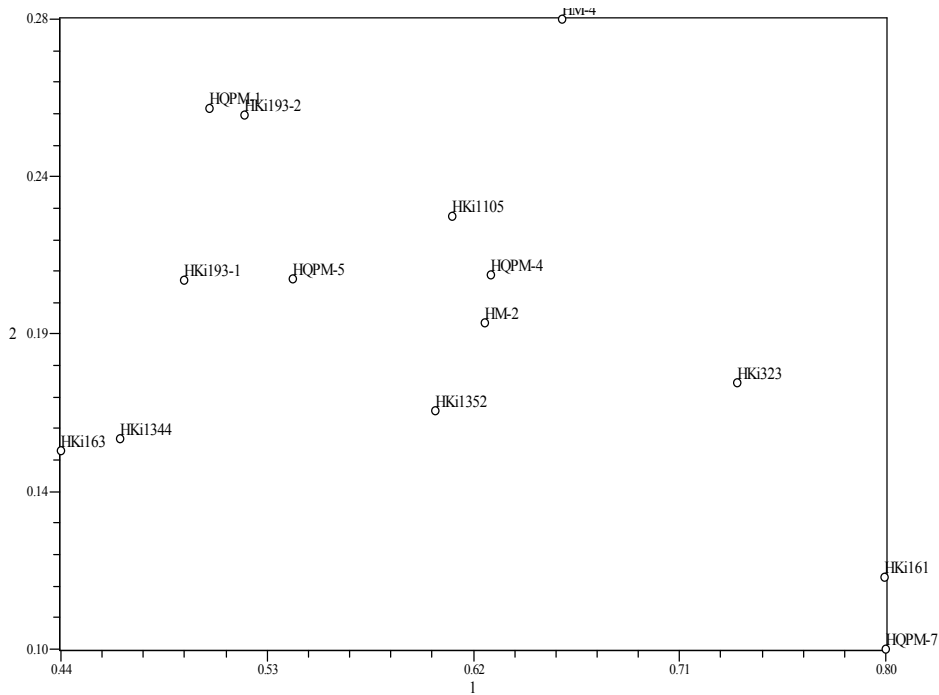
**Plate.2:** Polymorphic SSR marker profile obtained with pumc1040; L: 100bp ladder, lane13: HKI 1105, lane14: HKI 323, lane15: HM4, lane16: HKI 1352, lane17: HKI 1344, lane18: HM2



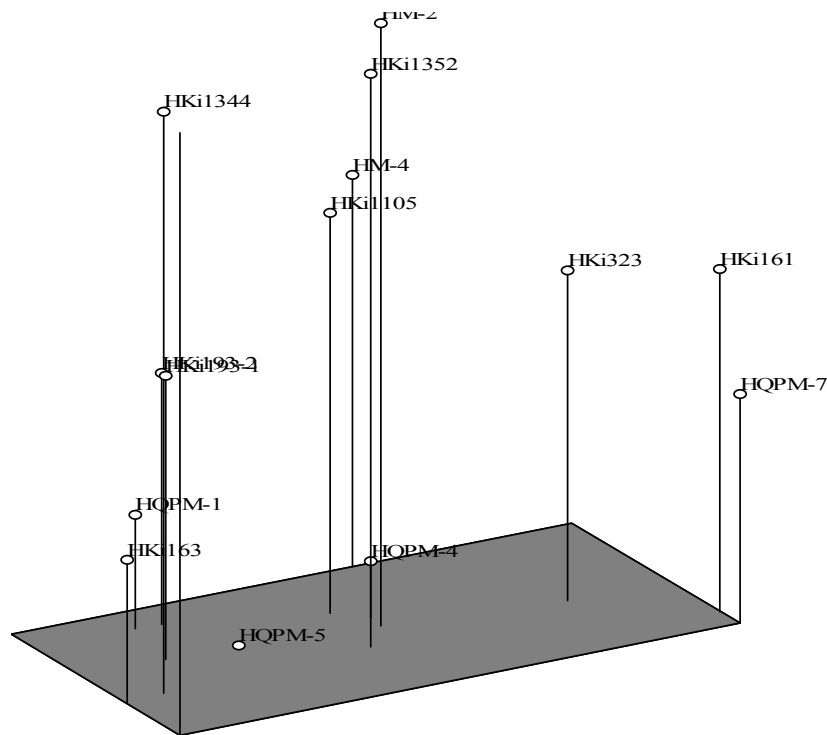
**Plate.3:** Polymorphic SSR marker profile profile obtained with HM2 with pumc1064; L: 100bp ladder, lane16: HKI 1352, lane17: HKI 1344, lane=18: HM2



**Fig.1** Dendrogram (NTSYS-pc) showing genetic relationships among six hybrids and their eight parental genotypes using allelic data at seventy five SSR loci



**Fig. 2 Two-dimensional PCA scaling of six hybrids and their eight parental genotypes using genetic distance matrix data at seventy five SSR loci**



**Fig.3 Three-dimensional PCA scaling of six hybrids and their eight parental genotypes using SSR similarity matrix data at seventy five SSR loci**

The minimum similarity of 59.5% was observed between (HM-2 hybrid and HKI193-1) and maximum was 76% between the hybrids (HQPM-4 and HQPM-5) and (HM-2 and HKI1344). In the first cluster HQPM1 similar to one of its parent HKI163 at a similarity coefficient of 70%. In the second sub cluster hybrid HM2 is closer to its parent HKI1344 at similarity coefficient of 76%. HKI161 and HKI323 are closer to each other at similarity coefficient of 72% and these were found to be diverse from HKI1105 at 67.2% of similarity coefficient. HM-4 is more similar to one of its parent HKI 1105 at a similarity between 65-

75%. Choudhary *et al.* [4] used sixty five SSR markers to make cluster of 24 genotypes which divided these genotypes in four major cluster genotypes HKI161, HKI323 and HKI1105 fall in same sub-cluster here also as in our study HKI161 is more close to HKI323 at a similarity coefficient of 70% and these two genotypes are diverse from HKI1105 at a similarity coefficient 62%. Genetic diversity value obtained by Daniel *et al.* [6] 59.2% was comparable to the value in the present study.

Furthermore, simple matching matrix was subjected to principal component analysis (PCA). The grouping of fourteen genotypes using PCA analysis in 2-D (Fig 2) and 3-D scaling (Fig 3) followed the same pattern as depicted in dendrogram with minor differences is also supported by [4].

#### Allelic profile for SSR markers

In the present investigation, Primers amplified a total of eighty nine alleles which varied from 1 (pumc1009) to 3 (pumc1183) with a mean of 1.5 allele per locus. Similar results were also found by (Shah *et al.* 2009) as they reported 1.56 alleles per locus and the value was comparable to value 2.07 per locus obtained by Nguyen *et al.* [12]. This value is much lower than the value of mean allele per locus reported earlier by Sun *et al.* [21] they found an average of 4.6 alleles per primer. Similarly high values (4.9 alleles per locus) were also reported by [11], [22] (4.9 alleles) with 85 SSR loci, Qi-Lun *et al.* [15] (6.4 SSR alleles per locus), [16] (4 alleles per locus), [8] (4.9 alleles per locus), (Lanes *et al.* 2014) (5.8 alleles per locus) and (Choudhary *et al.* 2015) (4.1 alleles per locus).

**Polymorphic information content (PIC)** value obtained in the present study was 0.402 for 2 alleles and 0.523 for 3 alleles which is near to average value of 0.59 by [20]. Similar PIC values (an average PIC of 0.58 on 56 inbred lines of maize) were also recorded by [5] (0.61) and by (Daniel *et al.* 2012) (0.512) while [3] reported average PIC value of 0.49 on 22 maize genotypes. The values are much lower than value obtained by [1] (0.75 to 0.94 and by [7] (0.70). These minor differences in the results are due to variation in amplification pattern obtained by different set of primers.

#### CONCLUSION

In this study, appearance of novel bands evidencing polymorphism may be because of chromosome variation or gene rearrangements in hybrid populations. The results of the present study suggested that there are still chances to incorporate genetic variations to the hybrids so, to increase the quality and yield of maize. New variation may be due to hybridization crossing breeding. SSR markers are very efficient and reliable for estimation of existing genetic variability.

#### REFERENCES

1. Abdellatif, K.F. and Khidr, Y.A. (2010). Genetic Diversity of New Maize Hybrids Based on SSR Markers as Compared with Other Molecular and Biochemical Markers. *J. Crop Sci. Biotech.* **3**: 139-145.
2. Ashikawa, I., Kurata, N., Saji, S., Umehara, Y., Sasaki, T. (1999). Application of restriction fragment fingerprinting with a rice microsatellite sequence to assembling rice YAC clones. *Genome*, **42**, 330-337.
3. Baniseti, K. (2012). Identification of candidate gene-based SSR markers for lysine and tryptophan metabolic pathways in maize (*Zea mays*). *Plant Bre.* **131**(1):20-27.
4. Choudhary, M., Hossain, F., Muthusamy, V., Thirunavukkarasu, N., Saha, S., Pandey, N., Jha, S. K. and Gupta, H. S. (2015). Microsatellite marker-based genetic diversity analyses of novel maize inbreds possessing rare allele of  $\beta$ -carotene hydroxylase (*crtRB1*) for their utilization in  $\beta$ -carotene enrichment. *J. Plant Biochem. Biotechnol* DOI 10.1007/s13562-015-0300-3.
5. Cholastova, T., Soldanova, M. and Pokorny, R. (2011). Random amplified polymorphic DNA (RAPD) and simple sequence repeat (SSR) marker efficacy for maize hybrid identification. *Afr J Biotech.* **10**(24): 4794-4801.
6. Daniel, I. O., Adetumbi, J. A., Oyelakin, O. O., Olakojo, S. A., Ajala, M. O. and Onagbesan, S. O. (2012). Application of SSR markers for genetic purity analysis of parental inbred lines and some commercial hybrid maize (*zea mays*). *American J. Exp. Agr.* **2**(4): 597-606.
7. Gupta, A. and Singh, A. K. (2010). Studies on Molecular Diversity in Maize Inbreds Using SSR Markers. *Trends. Biosci.* **3**(2): 106-109.
8. Khoza, S. (2012). Assessment of maize for genetic diversity, cultivar superiority, and combining ability. Master of Science dissertation. University of KwaZulu Natal, Pietermaritzburg, South Africa.
9. Lanes, E. C., Viana, M. S., Paes, G.P., Paula, F. B., Maia, C., Caixeta, E.T. and Miranda, G.V. (2014). Population structure and genetic diversity of maize inbreds derived from tropical hybrids. *Genet. Mol. Res.* **13** (3): 7365-7376.
10. Lucchese, C., Dinelli, G., Miggiano, A., Lovato, A. (1999). Identification of pepper (*Capsicum* spp.) cultivars by field and electrophoresis tests. *Seed Science and Technology*, **27**, 37-47.
11. Lu, H. and Bernardo, R. (2001). Molecular marker diversity among current and historical maize inbreds. *Theor. Appl. Genet.* **103**: 613-617.
12. Nguyen, T. V., Doan, T. B., Leo, E., Cuong Manh Bui, C. M., Paul W. J., Taylor, W. J. and Ford, R. (2012). Application of Microsatellite Markers to Fingerprint and Determine the Representational Diversity within a Recently Established Elite Maize Inbred Line Breeding Program. *J. Agric. Res.* **4**: 6.

13. Paliwal, R.L., Granados, G., Lafitte, H.R., Violic, A.D. and Marathee, J.P. (2000). Tropical Maize: Improvement and Production, Food and Agriculture Organization of the United Nations, Rome, Italy.
14. Prajapati, D. R., Pahuja, S. K., Verma, N. K., and Chaudhary S. (2018). Morphological Characterization of Sorghum [*Sorghum bicolor* (L.) Moench] Germplasm for DUS Traits, *Int.J.Curr.Microbiol.App.Sci* (2018) **7**(2): 2058-2071
15. Qi-Lun, Y., Ping, F., Ke-Cheng, K. and Guang-Tang, P. (2008). Genetic diversity based on SSR markers in maize (*Zea mays* L.) landraces from Wuling mountain region. *China. J Genet.* **87**:287–291.
16. Rakshit, S., Santosh, H. B., Sekhar, J. C., Nath, R., Meena, S., Chikkappa, G. K., Gadag, R. N. and Dass, S. (2011). Analysis of genetic diversity among maize inbred lines differing for resistance to pink borer and postflowering stalk rot. *J Plant Biochem Biotechnol* **20**:173–181
17. Saghai-Marooif, M. A., Soliman, K. M., Jorgensen, R. A. and Allard, R.W. (1984). Ribosomal DNA spacer-length polymorphism in Barley: Mendelian inheritance, Chromosomal-location and population dynamics. *PNAS* **81**: 8014-8019.
18. Sambrook, J., Fritsch, E. F. and Maniatis, T. (1989). Molecular Cloning, a Laboratory Manual. *Cold Spring Harbor Laboratory Press, Cold Spring Harbor, NY.* **3**(8): 691-733.
19. Shah, Z., Munir, I., Ali, S., Iqbal, A., Mumtaz, S., Nwaz, R. and Swati, Z. A. (2009). Genetic diversity of Pakistani maize genotypes using chromosome specific simple sequence repeat (SSR) primer sets. *Afr. J. Biotechnol.* **8**: 375-379.
20. Senior, M. L., Murphy, J. P., Goodman, M. and Tuber, C. W. (1998). Utility of SSRs for determining genetic similarities and relationships in maize using an agarose gel system. *Crop Sci.* **38**: 1088-1098.
21. Sun, G. L., William, M., Liu, J., Kasha, K. J. and Pauls, K. P. (2001). Microsatellite and RAPD polymorphisms in Ontario corn hybrids are related to the commercial sources and maturity ratings. *Mol. Breed.* **7**: 13-24.
22. Warburton, M. L., Xianchun, X., Crossa, J., Franco, J., Melchinger, A. E., Frisch, M., Bohn, M. and Hoisington, D. (2002). Genetic characterization of CIMMYT inbred maize lines and open pollinated populations using large scale fingerprinting methods. *Crop Sci.* **42**: 1832-1840.
23. Wasala, S. K. and Prasanna B. M. (2012). Microsatellite marker-based diversity and population genetic analysis of selected lowland and mid-altitude maize landrace accessions of India. *J. Plant Biochem. Biotechnol.* DOI 10.1007/s13562-012-0167-5.

**CITATION OF THIS ARTICLE**

Shalu Chaudhary, Pushpa Kharb, Shikha Yashveer, Deepak Raj Prajapati, and Mehar Chand Kamboj. Utilization of SSR Markers for Studying Genetic Diversity of Popular Maize and their Hybrids. *Bull. Env. Pharmacol. Life Sci.*, Vol 8 [1] December 2018 : 103-109