



A Case Study of Karnofsky Performance Scale In Breast Cancer

S.Muthuperumal¹, B.Kiran Bala²

1- Department of Mathematics, K.Ramakrishnan College of Engineering, Trichy, Tamil Nadu, India.

2 –Department of Computer Science and Engineering, K.Ramakrishnan College of Engineering, Trichy, Tamil Nadu, India.

Email: kiranit2010@gmail.com

ABSTRACT

Breast cancer is one of the thread disease in the world still earlier detection of this particular still in under research due to various condition like age, married life style and climatic conditions are also to be included in that research our case study will contribute the performance analysis of breast cancer patient analysis which gives more prediction to the researchers in this sector and useful to doctors as well as for the patients and to have the performance scale the most famous algorithm named karnofsky has been implemented and results justify the entire case study.

Keywords: Karnofsky, Breast Cancer, Symptoms and Malignant.

Received 12.04.2020

Revised 21.05.2020

Accepted 02.06.2020

INTRODUCTION

The present treatment detection process initially patient with illness they will come to hospital and doctor will check and make them scan or MRI from the result alone we are detecting the breast cancer in that also we have little variation with tumor and malignant disease that is separate process will be carry through different diagnose methods and detection of breast cancer in present technology still under process but to give support for the researchers in effective manner this performance scale measures give idea about the disease from normal life to till death[1]. The present detection methods deals with MRI images and scan are used to diagnose this kind of diseases to contribute to this disease the origin to end of this disease taken as case by using the famous algorithm karnofsky which gives and impact to the researchers and confidence to give better result in the present technology is possible. In this type disease mainly affected by female that to in different category like age, blood group, married this all are the factors which are under taken for this entire study [2].

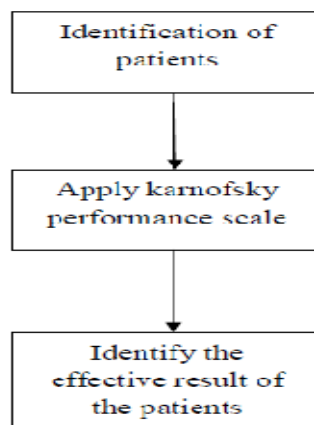


Figure 1: Workflow of This System

MATERIAL AND METHODS

The famous performance scale algorithm namely karnofsky has been implemented in this process to give more effective support to researchers in cancer field and also having the Figure 1 shows the workflow diagram [3].

TABLE 1: PROPOSED KARNOFSKY PERFORMANCE SCALE

S.No	Condition	Percentage	Level	Remarks
1.	No death and stable	100	0	Regular in routine life
		90		But taking tablets
2.	Normal life with symptoms	80	1	Regular in routine life with diseases
		70		Continuous illness
3.	Cannot proceed the normal life with frequent treatment	60	2	Frequently visit to hospital
		50		Need of assistance in home
4.	Hospitalized with sick	40	3	Admitted in hospital
		30		Need of assistance in hospital
5.	Death and danger zone	20	4	High Risk
		10		Completely inactive
		0		Death

The Table 1 shows the flow of the karnofsky performance scale which is implemented in this case study and procedure for the case study followed below [6][9]

Step1: Identify the cancer patients

Step2: Keep on monitoring the patients with their interest

Step3: categories the patient and based on the input apply to our performance scale

Step4: Apply the performance scale result for the research.

The performance scale consist of levels, Condition, percentage and remarks for the case study and important constrain is condition and based on the condition the patients processed [4][8].

RESULT

This implementation shows the case study result by applying the karnofsky performance scale and important 3 parameters this case study is implemented and namely age, married and blood group based on the variation among this outcome using the performance scale result can be justifying [5][7].

TABLE 2: VARIATION IN AGE

S.No	Age	Levels	Percentage
1.	20-29	0,1	5%
2.	30-39	0-4	35%
3.	40-49	0-4	45%
4.	50-59	0-4	8%
5.	>=60	0-4	7%

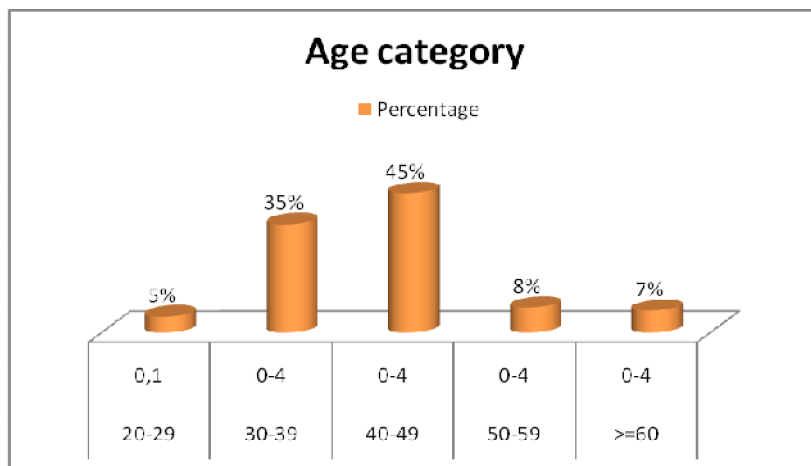


Figure 2: Age Category

TABLE 3: VARIATION IN MARITAL STATUS

S.No	Marital Status	Levels	Percentage
1.	Married	0-4	95%
2.	Unmarried	0-4	5%

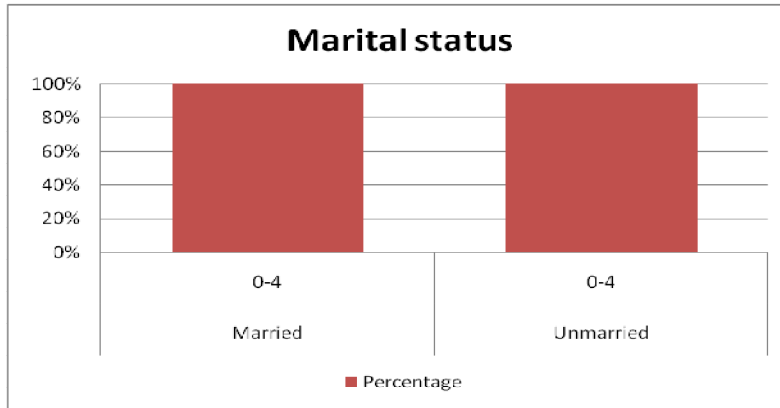


Figure 3: Variation in Marital Status

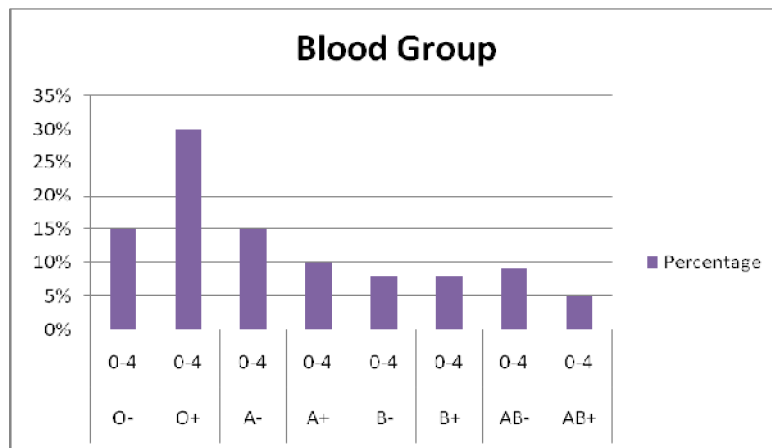


Figure 4: Variation in Blood Group

TABLE 4: VARIATION IN BLOOD GROUP

S.No	Blood Group	Levels	Percentage
1.	O-	0-4	15%
2.	O+	0-4	30%
3.	A-	0-4	15%
4.	A+	0-4	10%
5.	B-	0-4	8%
6.	B+	0-4	8%
7.	AB-	0-4	9%
8.	AB+	0-4	5%

CONCLUSION

The result of the case study shows how the performance scale algorithm has been implemented in breast cancer and parameter wise data collection also made like age, marital status and blood group wise also done in the case study for the collection of data from the above data researchers can easily implemented earlier detection algorithm for the breast cancer to produce the effective and efficient results.

CONFLICT OF INTEREST

Declare no conflict of interest.

REFERENCES

1. Deekshitha, Ch., Manaswini, P., Tarannum, J, Pratap Reddy, B., Raj Kumar, G., Shyam Sunder, A. (2019). Appraisal of karnofsky scale in females with cancer, *Int. j. pharm. phytopharm. Res.*, 9(5):1-7.
2. Vincent Mor, Linda Laliberte , John N. Morris , Michael Wiemann . (1984) The Karnofsky performance status scale: An examination of its reliability and validity in a research setting, *Cancer*. 53(9): 2002-2007.
3. Kiran Bala B, BalaKumar A. (2017) The Combination of Steganography and Cryptography for Medical Image Applications. *Biomedical and Pharmacology Journal*. 2017; 10(4):1793-1797.
4. Schaafsma, J., Osoba, D. (1994) The Karnofsky performance status scale re-examined: a cross-validation with the EORTC-C30. *Qual Life Res* 3: 413–424.
5. Kiran Bala, b, Infant Raj I. (2018) Comparative and identification of exact frequency domain approaches by using mammogram images. 2017 IEEE International Conference on Power, Control, Signals and Instrumentation Engineering (ICPCSI); 2536-2538.
6. Oliver, Torrent, (2012) Automatic microcalcification and cluster detection for digital and digitised mammograms. *Journal of Knowledge-Based Systems*; 28: 68–75.
7. B.Kiran Bala, S.Audithan, 'wavelet and curvelet analysis for the classification of microcalcification using mammogram images', Published in *IEEE xplore*, 517-521.
8. Kiran Bala B, Lourdu Joanna J, 'multi modal biometrics using cryptographic algorithm', *European journal of academic essays* 1(1) 2014.
9. Kiran Bala, B. Audithan, S. Kannan, G. and Raja, K. (2016). Frequency Domain Approaches for Breast Cancer Diagnosis. *Australian Journal of Basic and Applied Sciences*; 10 (2): 93-96.

CITATION OF THIS ARTICLE

S.Muthuperumal, B.Kiran Bala. A Case Study of Karnofsky Performance Scale In Breast Cancer. *Bull. Env. Pharmacol. Life Sci.*, Vol 9[7] June 2020 : 42-45